

INTERNATIONAL

Flexible Printed Circuit Board -  
**FPC presentation**

[www.pa-international.com.au](http://www.pa-international.com.au)



# FPC application

With the increasing demand for consumer electronic devices, FPC becomes an efficient solution to meet smaller with more advanced function.

FPC is widely used in consumer and communication products such as:

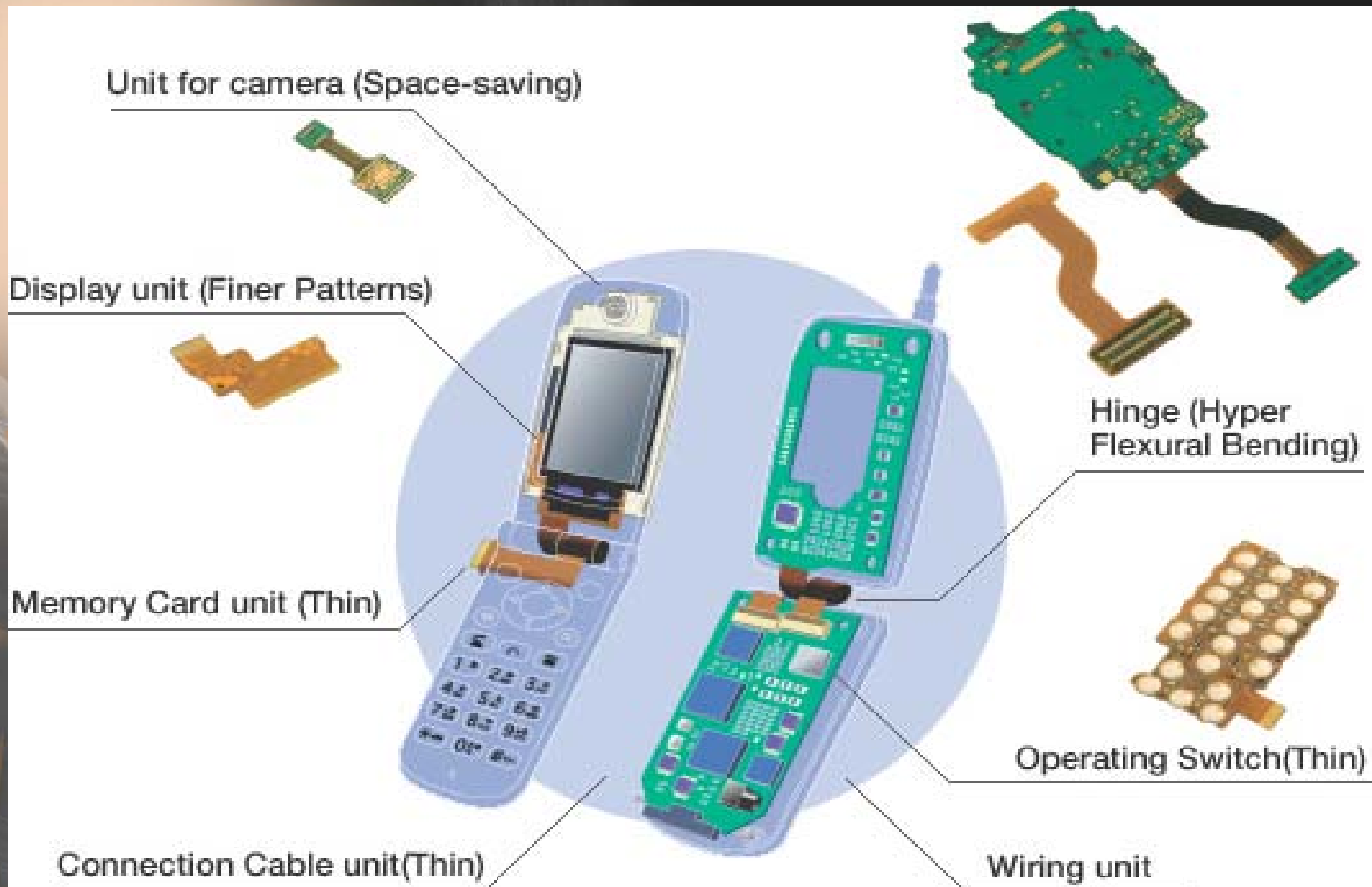
- Mobile Phone
- Digital Camera
- HDD
- Flat Panel display
- Computer
- Navigation System

[www.pa-international.com.au](http://www.pa-international.com.au)

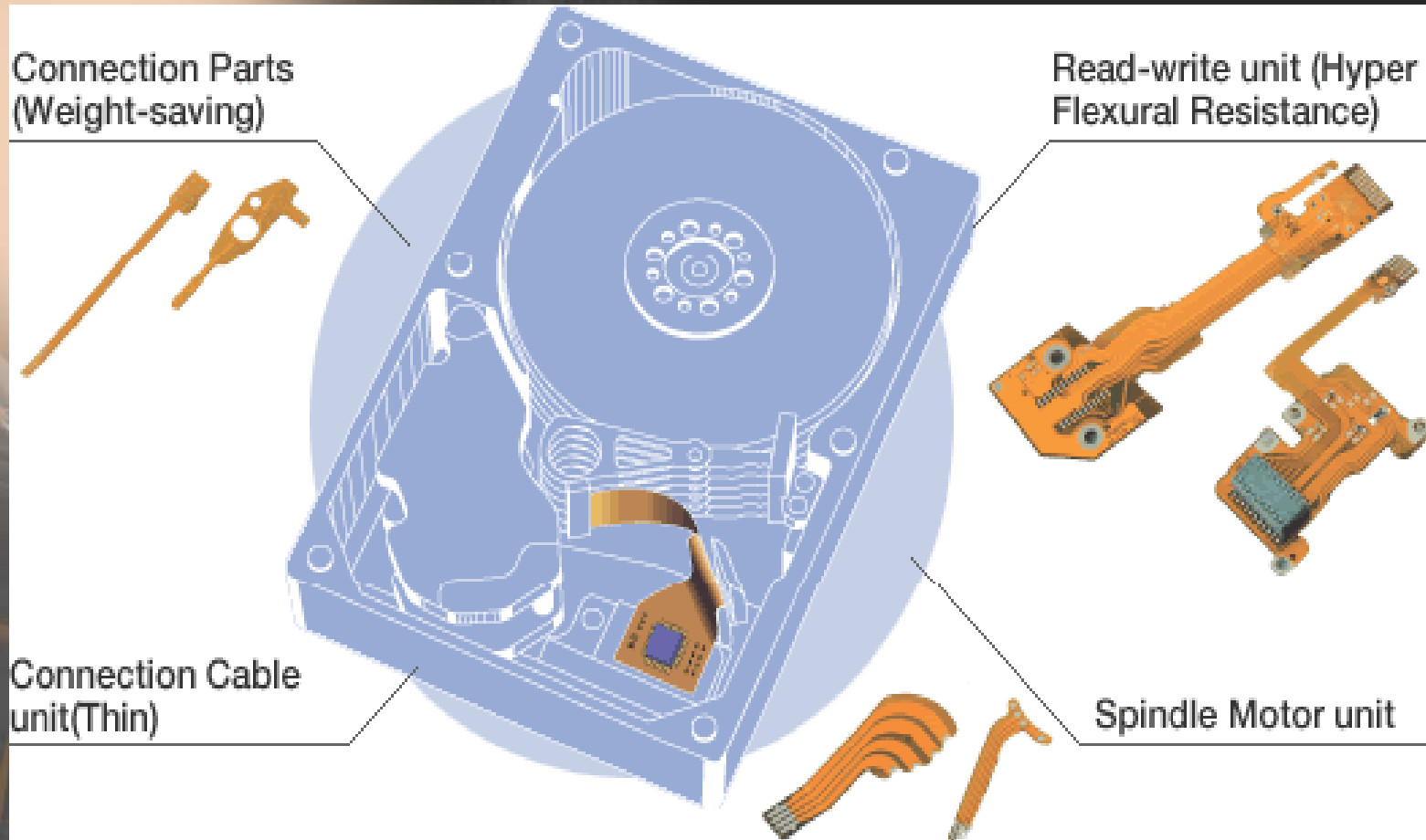


PA  
INTERNATIONAL

# Mobile phone used FPC



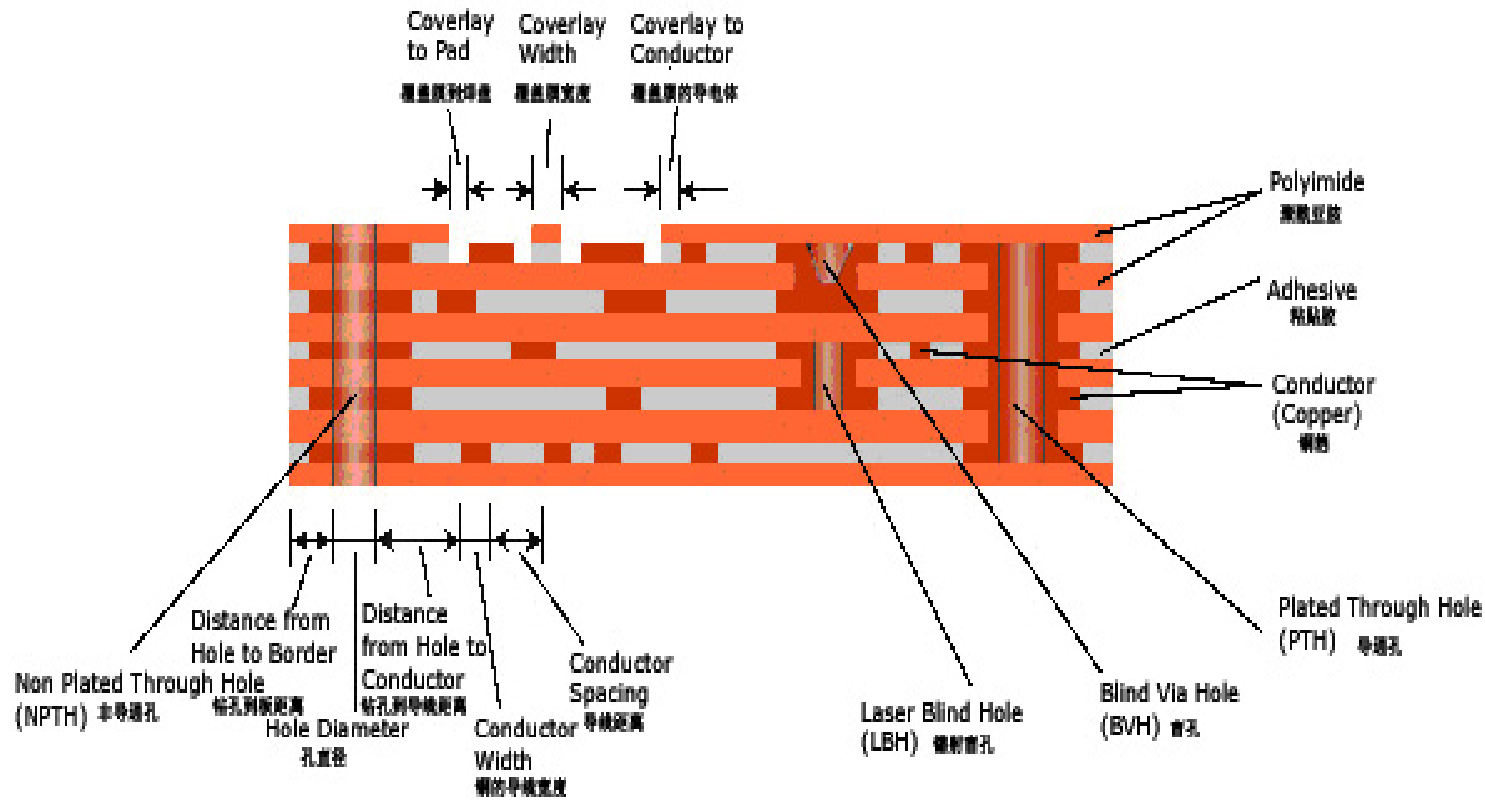
# HDD used FPC



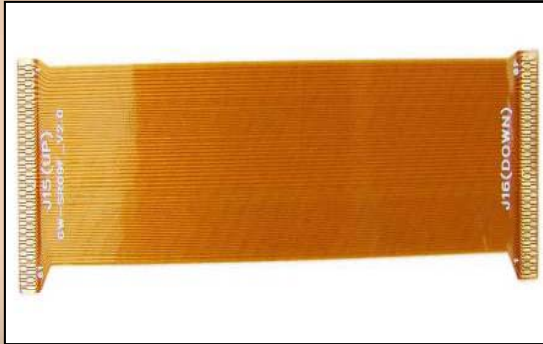
# FPC Structure

## Multilayer FPCB Standard Structure

软性多层板标准结构



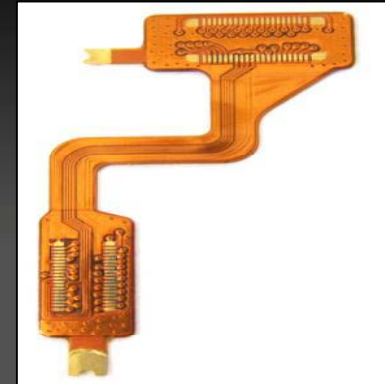
# Product Type



Single sided Flex



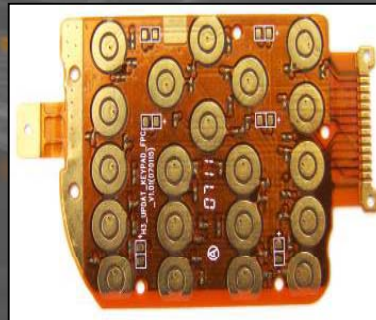
Double sided Flex



Multilayer Flex



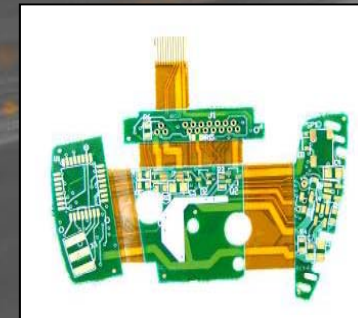
Single sided Flex



Double sided Flex



Multilayer Flex



Rigid Flex

# Production Capability

num	Item	Capability
1	Number of layers	1-6
2	Maximum panel size	250mm × 500mm
3	Minimum flex thickness	0.075mm (0.003")
4	Minimum drill hole size	0.2mm (0.008")
5	Drill hole size tolerance	±0.025mm (±0.001")
6	Hole wall thickness (Copper)	≥10um (≥0.0004")
7	Minimum line width / spacing (single-side)	0.05/0.05mm (0.002"/0.002")
8	Minimum line width / spacing (double-side, multi-layer)	0.076/0.076mm (0.003"/0.003")
9	Etching tolerance	±10%
10	Minimum punching hole size	φ2.0mm (0.08")
11	Maximum punching thickness	0.6mm (0.024")
12	Minimum conductor spacing for screen printing	0.15mm (0.006")
13 Surface Finish	Nickel thickness	100u" ~300u"
	Gold plating thickness	≥1 u"
	Immersion gold Thickness	1u" ~3u"
	Tin plated thickness	150u" ~400u"
	HASL	1-15 um
	Immersion Tin	0.1-0.3 um
14	Smallest pad size for E-test	0.25mm (0.01")
15	Minimum profile tolerance	Standard die : ±0.1mm(±0.004") Precision die : ±0.05mm(±0.002")

[www.pa-international.com.au](http://www.pa-international.com.au)



INTERNATIONAL

# Factory Facilities



Horizontal  
Black Hole  
Line



Automatic  
Copper Plating  
Line



Collimated  
Exposure  
Develop



Etching and  
Stripping  
Machine



Automatic  
Gold Plating  
Line



Clean Line



Tinning Machine



Electrical Tester



# Contact us

- **Hong Kong Office:**

- Address: Unit 1001, Fourseas Building 208-212,  
Nathan Road, Kowloon, Hong Kong

- Tel: 00852-3426 3738

- Fax: 00852-2783 7978

- **Mainland Office:**

- Address: Room 4B, Building 11#, Zhonghui Shanpan Mingcheng,  
ChangAn Town, Dong Guan City, Guangdong Province, P. R. China

- Tel: 0086-769-81761039

- Mobile: 0086-159 9982 6734

- Fax: 0086-769-81761039

- **Website:** [www.pa-international.com.au](http://www.pa-international.com.au)

- **E-mail:** [sales@pa-international.com.au](mailto:sales@pa-international.com.au)

[www.pa-international.com.au](http://www.pa-international.com.au)

